



XeroFour Ice Tire Chain Guide Install

LIMITATIONS OF USAGE

XeroFour Chain guides are designed to install and add an additional layer of protection between your chain and ice studs. That being said, nothing is indistrucable. We have found over years of use following the install giude is key to a long life of the part.

WARRANTY

All chain guides offer a one year replacement warranty against defects.

INSTALLATION

If it does not look right or fit properly please email RYAN@XEROFOUR.COM

DO NOT PRY OR HAMMER INTO PLACE, HAND INSTALL ONLY

- **NON ORING CHAIN REQUIRED**
- DO NOT RUN WITH ORING CHAIN - Damage to the chain guide will cause premature failure.
- Installation recommended 60-75 degrees F (room / part temperature)
 - If installing in winter - Put the chain guide indoors until installation.

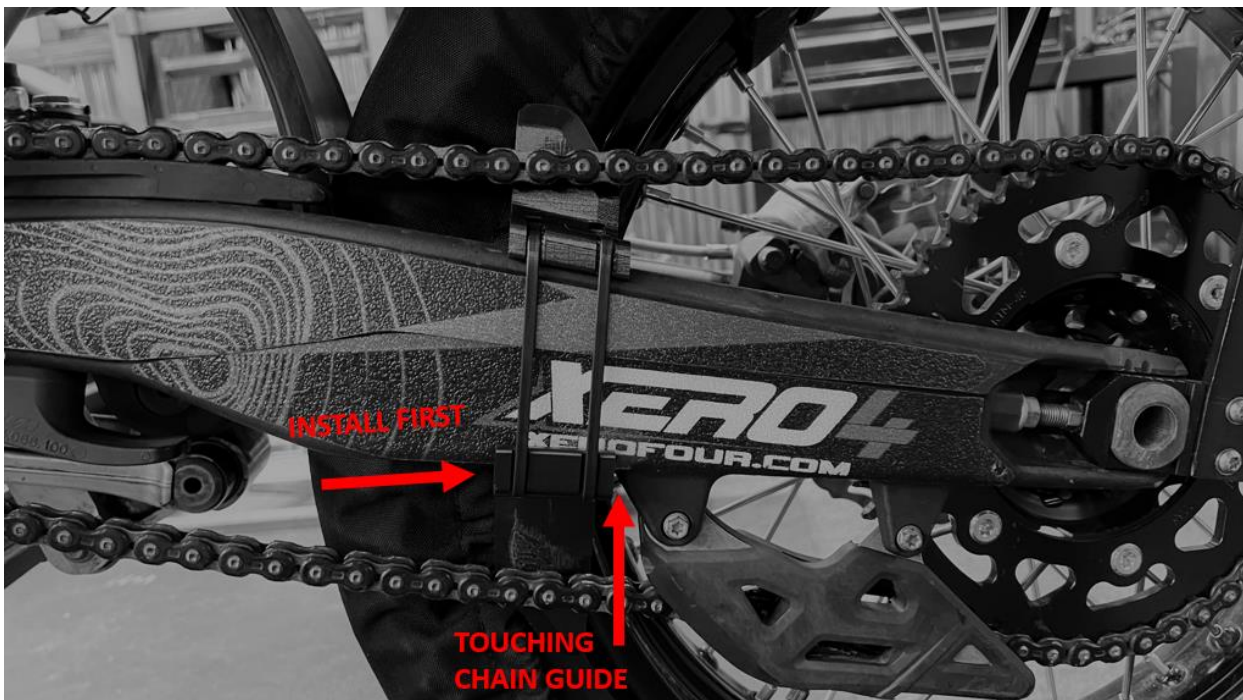
Remove rear wheel

[NOTE: Please see install arrow on back of chain guide.](#)

Clip bottom of chain guide under swing arm

Slowly slide the top of the chain guide over the top of the swingarm

At this point the chain guide should rest against the OEM chain guide to the rear of the motorcycle



If any movement is noticed at this point in time, remove chain guide slowly and use supplied 3M VHB tape to shim as needed. OEM cast swing arms have variation from model to model.

Install supplied zip ties, and reinstall wheel

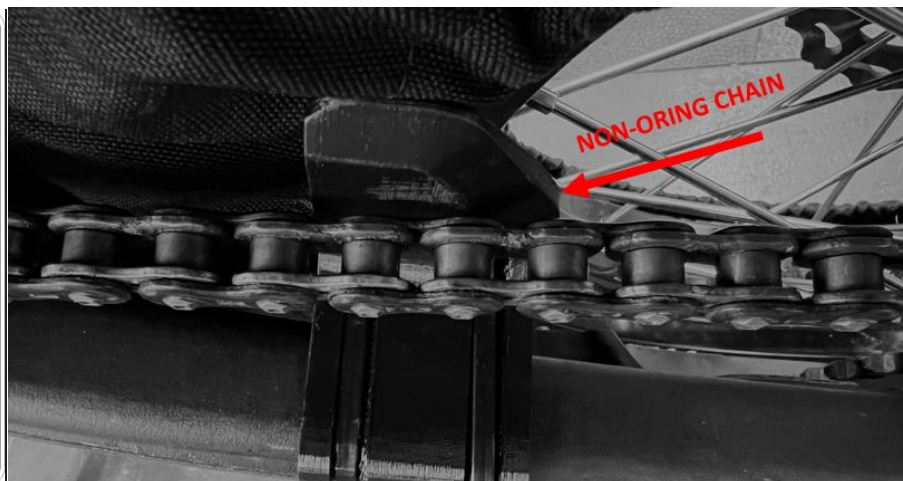
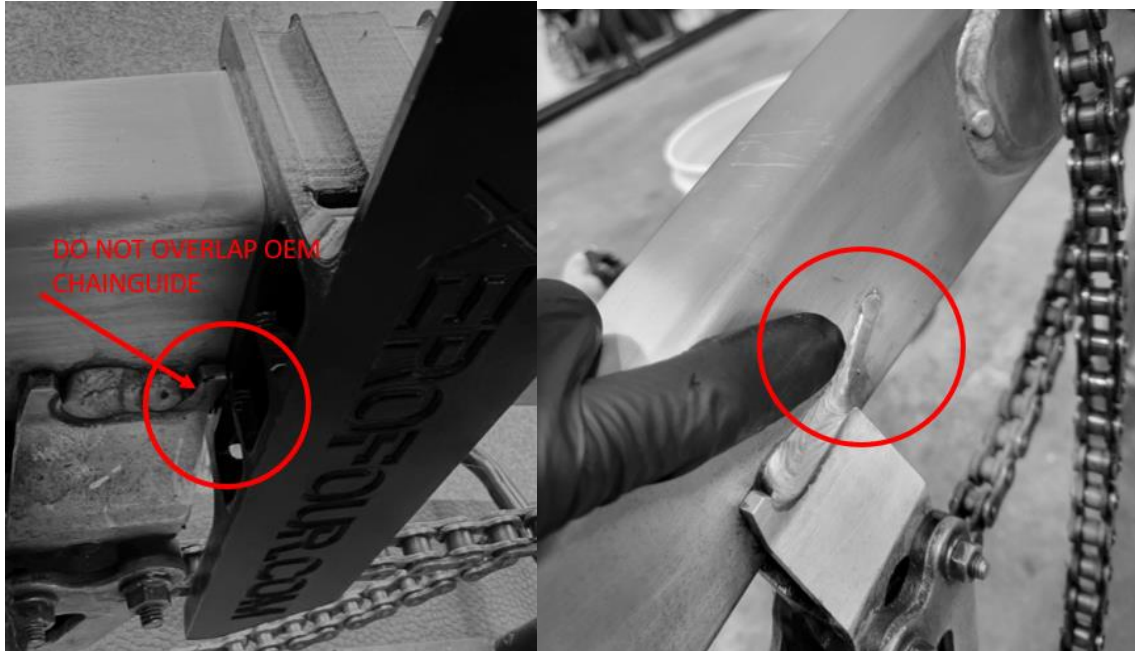
Spin wheel to verify clearance from chain guide to the wheel, as well as chain guide to chain.

Be sure your NON-Oring chain is adjusted as specified in your owner manual.

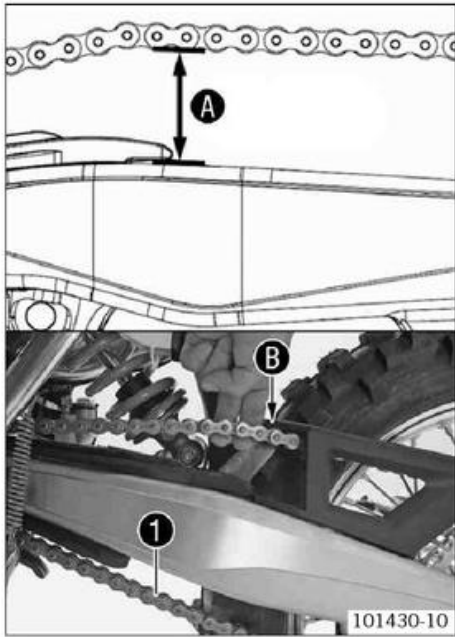
Recommned the chain on the tigh side of the spec to minimze chain slap that may cause premature failure.

Yamaha / Honda

DO NOT OVERLAP OEM CHAIN GUIDE, ANY EXCESS WELD FROM MANUFACTURE MUST BE SANDED FLUSH



KTM EXAMPLE CHAIN TENSION (REFER TO OWNERS MANUAL)



- Raise the motorcycle with the lift stand. (☞ p. 42)
- Push the chain at the end of the chain sliding component upwards to measure the chain tension ❶.

i Info

The lower chain section ❶ must be taut.

When the chain guard is mounted, it must be possible to pull up the chain at least to the point where it makes contact with chain guard ❷.

Chain wear is not always even, so you should repeat this measurement at different chain positions.

Chain tension	55... 58 mm (2.17... 2.28 in)
---------------	-------------------------------

- » If the chain tension does not meet specifications:
 - Adjust the chain tension. (☞ p. 58)
- Remove the motorcycle from the lift stand. (☞ p. 42)